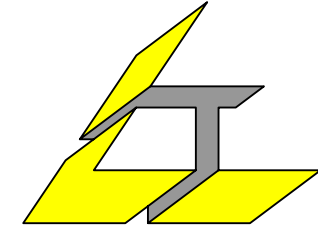


Asylunterkunft
Chlupfwiesstr. 38, 8165 Oberweningen

Bauherr :
Gemeindeverwaltung
Dorfstrasse 6
8165 Oberweningen

Vorprojekt

Variante Holz, Nord
Fassaden

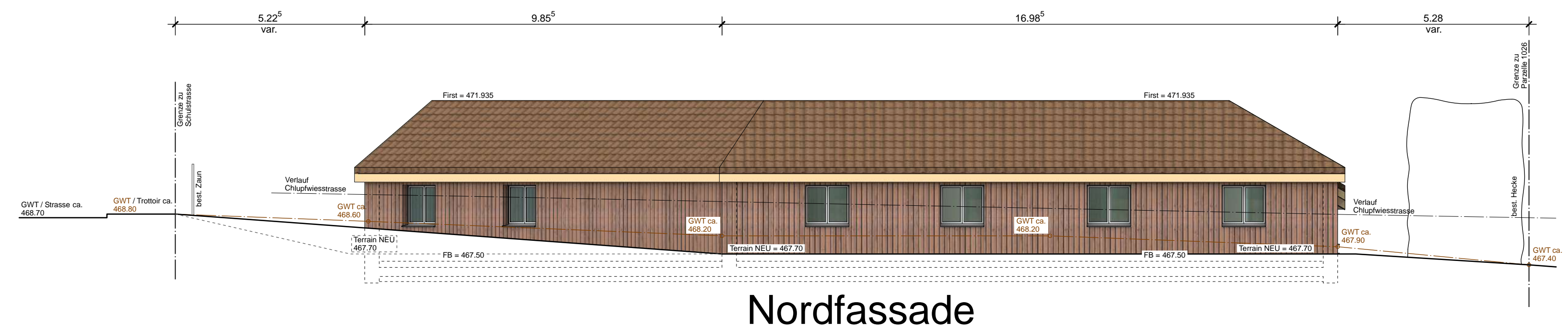


Trutmann + Agassis
Architekten AG

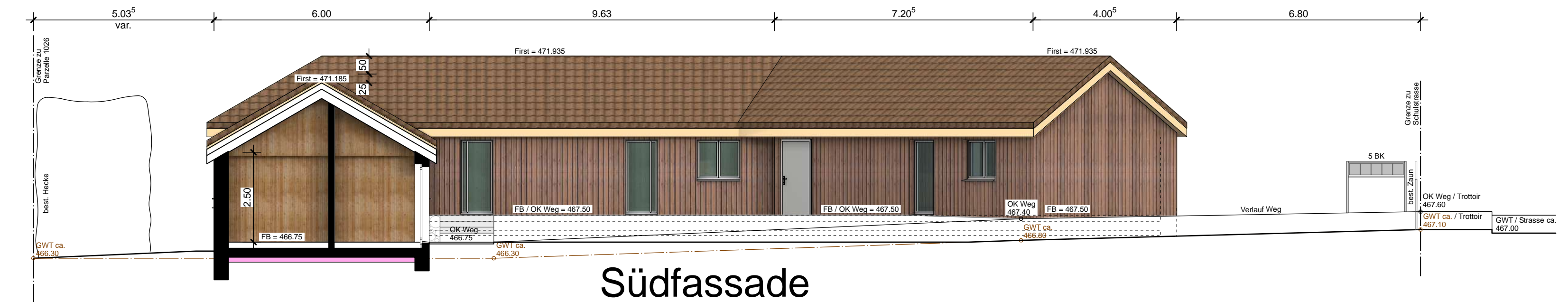
Watterstrasse 33
8105 Regensdorf

Tel.044 840 12 22
www.truag.ch
info@truag.ch

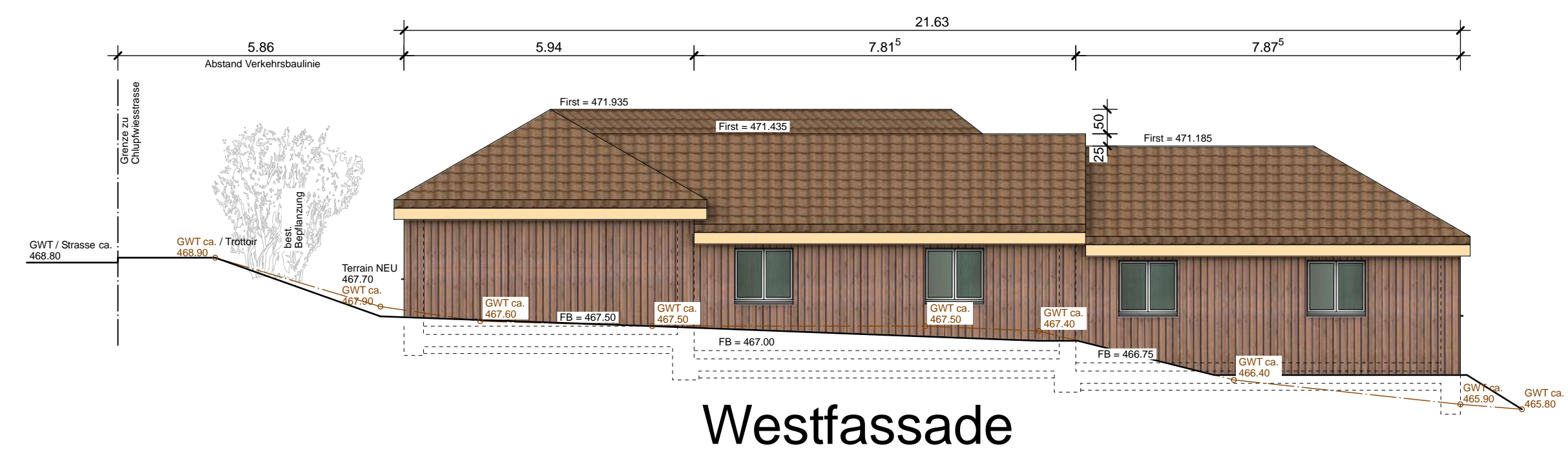
289	02
Dat: 22.03.2024	Mst: 1:100
Gr: 30/88	Gez: yg
Rev:	was:
/Z/289 Oberweningen, Asylheim, Gemeindeverwaltung Oberweningen/ Studie NEU/100_Model_NEU	



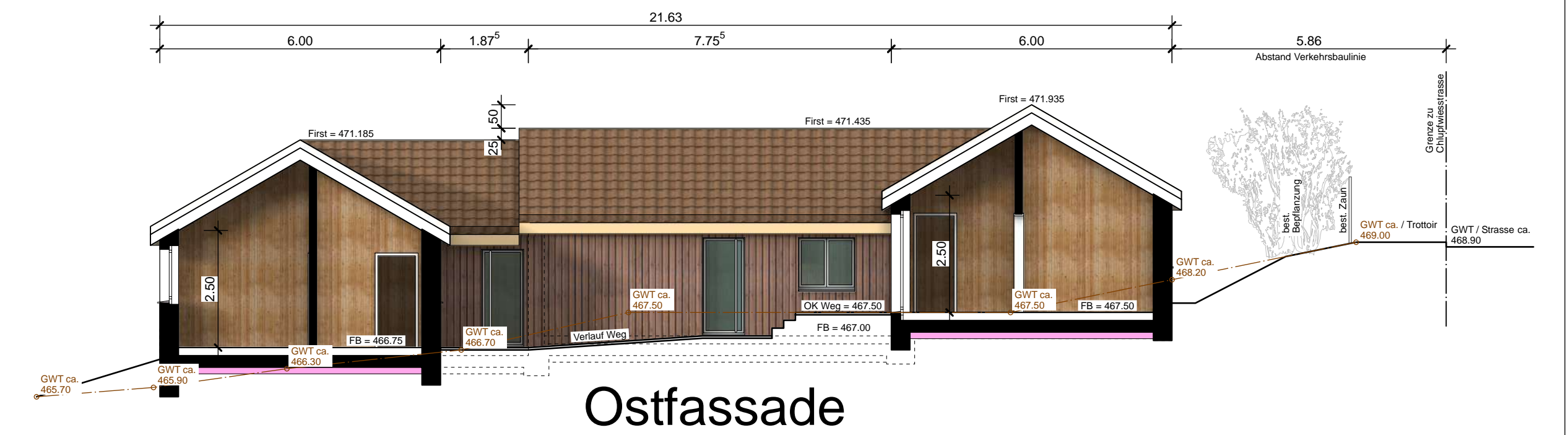
Nordfassade



Südfassade



Westfassade



Ostfassade

- LEGENDE**
- Bestehend
 - Neu
 - Abbruch

